

EQUIP. TYPE R390A/URR EXP. NO.

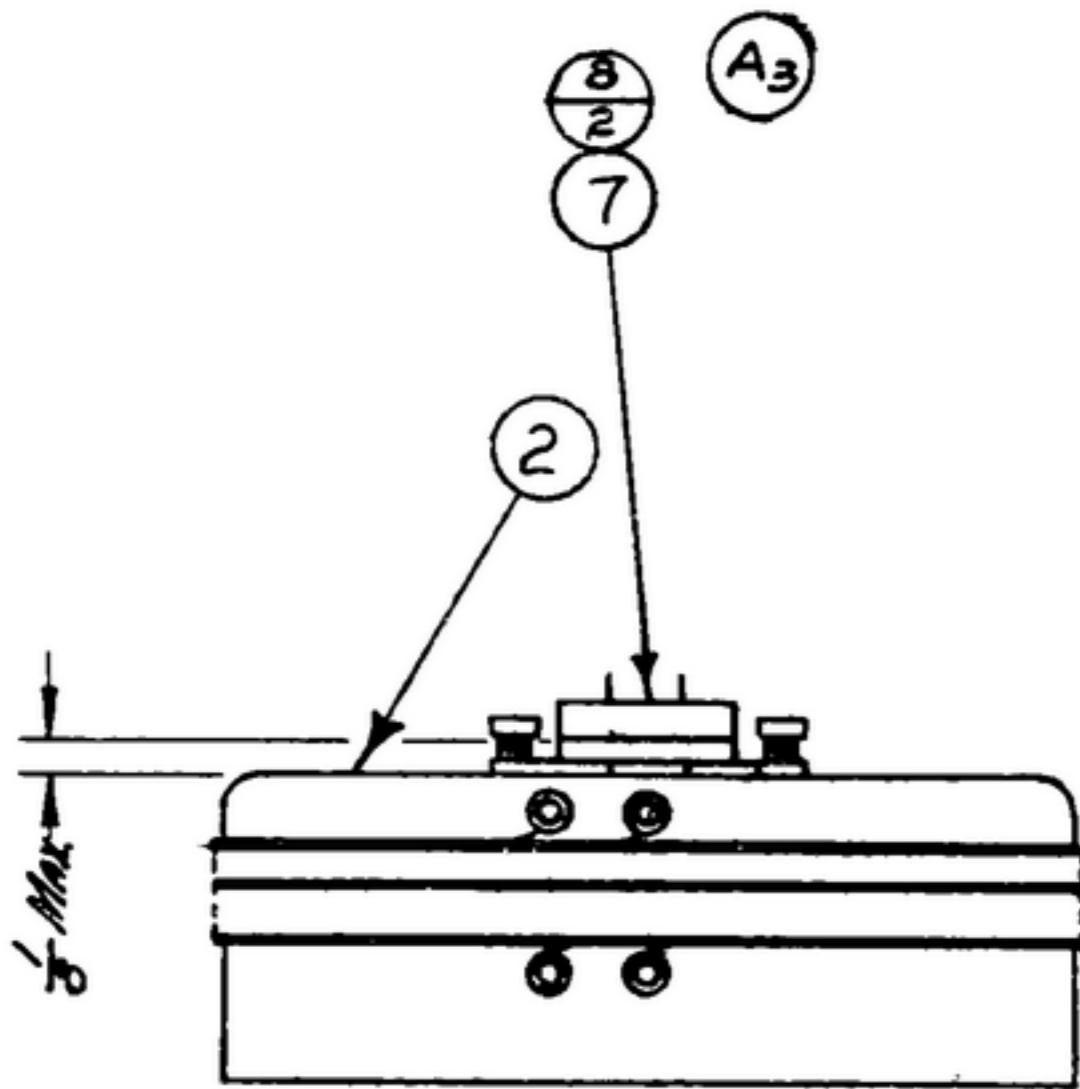
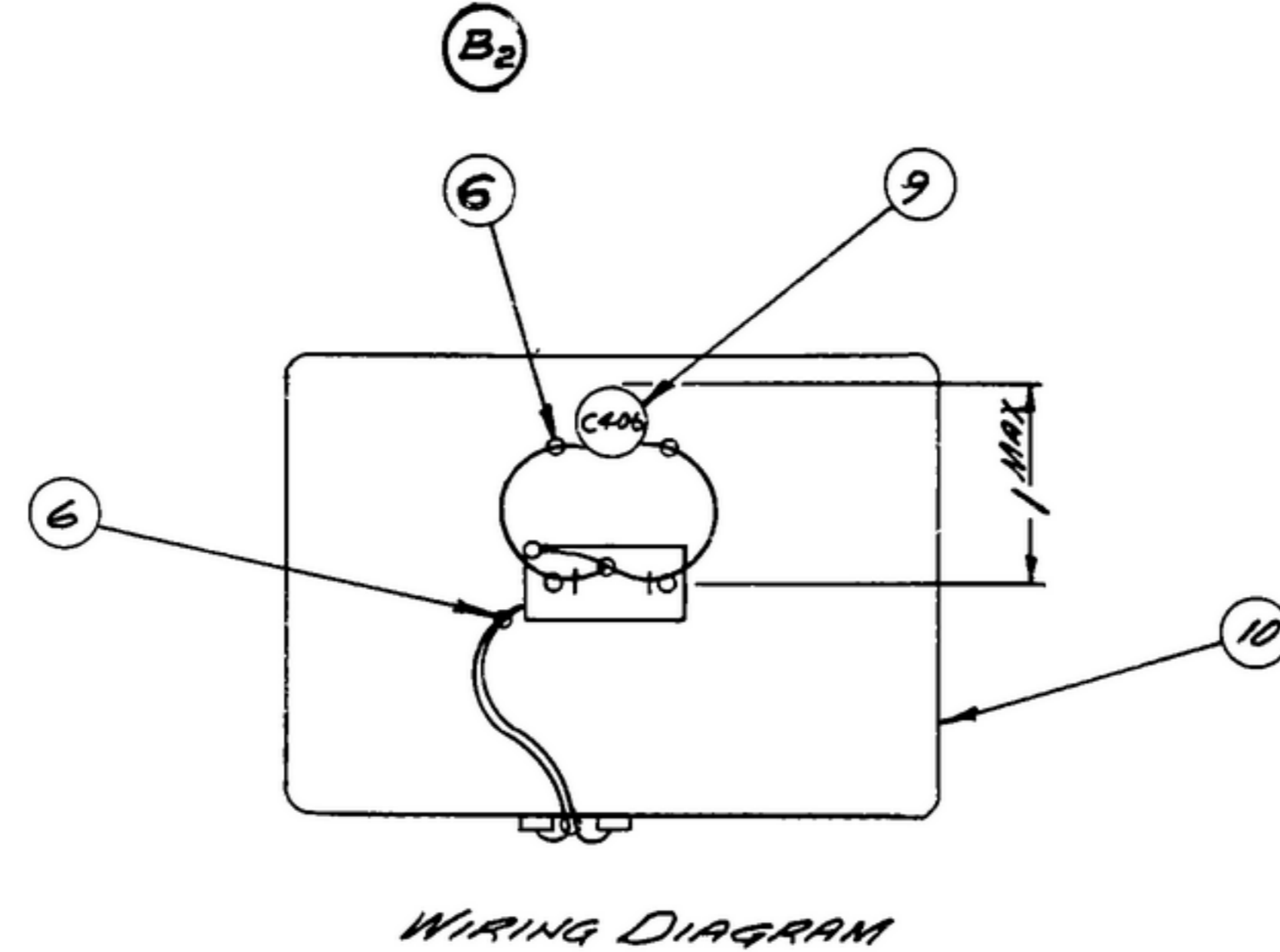
Col. 540 7600 002

NOTICE: WHEN GOVERNMENT DRAWINGS, SPECIFICATIONS, OR OTHER DATA ARE USED FOR ANY PURPOSE OTHER THAN IN CONNECTION WITH A SPECIFICALLY RELATED GOVERNMENT PROCUREMENT OPERATION, THE UNITED STATES GOVERNMENT THEREBY ASSUMES NO RESPONSIBILITY FOR ANY INADEQUACIES, OMISSIONS, OR ERRORS THAT MAY OCCUR OR BE COMPLETED, OR FOR ANY DAMAGE, LOSS, OR INJURY TO PERSONS OR PROPERTY, OR FOR ANY PATENTED INVENTION THAT MAY IN ANY WAY BE RELATED THEREBY.

THIS DOCUMENT HAS BEEN PURCHASED BY THE GOVERNMENT AND MAY BE REPRODUCED AND USED IN CONNECTION WITH ANY GOVERNMENT PROCUREMENT OPERATION.

* FOR INFORMATION ONLY. CONTRACTOR MAY AT HIS OPTION DEVIATE FROM THESE PROCESS DETAILS.

SWE APPROVAL		REVISIONS			
SYM	PR 10042-1	SYM	DESCRIPTION	DATE	APPROVAL
		A ₆	A ₁ -IN NOTE 2 TAPE(13) WAS TAPE NOTE 5 WAS WINDING TO BE INSULATED WITH TAPE (3) BOTH SIDE, IN NOTE 8 INSULATION (6) WAS INSULATION (5). A ₂ -REMOVED NOTE 9. (VARNISH SPEC); A ₃ -REMOVED CALLOUT (1); A ₄ -ITEM 4 WAS 5/8 (2) WIDE. A ₅ -REMOVED ITEM 1 (SM-B-248858-1) & ITEM 5 (SM-C-249213-1). A ₆ -ADDED ITEM 13.	13 NOV. 59	42428-PC-59 REV'D. PME
		B ₂	B ₁ -SWE PART NO. REPLACED COLLINS PART NO. B ₂ -ITEM 6 WAS ITEM 5.	5 APRIL 60	42428-PC-59 REV'D. PME
		C ₃	C ₁ -ITEM 3, ADDED SWE NO. 11S111265-177, C ₂ -ITEM 4, 11S111265-187 WAS 11S111265-30, C ₃ -ITEM 13, 11S111265-183 WAS 11S142089.	24 JUNE 60	42428-PC-59 REV'D. PME
		D	(1)-ITEM 11 WAS 11S130318 VARNISH-BLUE; (2)-NOTE 10 WAS VARNISH NO. 7526, GENERAL ELECTRIC CORP. SCHENECTADY, N.Y. (3)-ITEM 13 WAS 11S111265-183, DESCRIPTION 1/2 WIDE.	17 OCT. 60	42428-PC-59 REV'D. PME



NOTES:

1. 4-40NC-2B x 3/16 HEX x 1/16 THK DOUBLE CHAMFER AS SUPPLIED BY CENTRAL SCREW CO., CHICAGO, ILLINOIS OR EQUAL.
2. WRAP CAN (2) ONE COMPLETE TURN WITH TAPE (4), LAPPING TAPE 1/2 IN. MIN. WIND 23 TURNS OF WIRE (10) & SOLDER ENDS AS SHOWN. WRAP ONE COMPLETE TURN OF TAPE (13) OVER WIRE LAPPING TAPE 1/2 IN. MIN.
3. ALL SOFT SOLDERING PER SPEC MIL-S-6872 USING ROSIN CORE SOLDER PER SPEC QQS-571 COMP SNGO.
4. WRAP THERMOSTAT (7) WITH 3 TURNS OF WIRE (10).
5. THERMOSTAT WINDING TO BE INSULATED WITH ONE COMPLETE TURN OF TAPE (3) BOTH SIDES.
6. SYMBOL \otimes INDICATES INSULATION.
7. TAPE MUST NOT EXTEND ABOVE DIMENSION SHOWN AND LEADS TO WINDING & THERMOSTAT MUST BE CLEAR OF LONG SIDE OF THERMOSTAT.
8. INSULATE CAPACITOR (9) LEADS WITH INSULATION (6).
10. LIQUID STATE THERMOSTAT MTS. NUTS (8) WITH LOCTITE GRADE C (11) AMERICAN SEALANTS CO. OR EQUAL.
11. IN ALL SPLIT BALLOONS, TOP FIGURE IS MATERIAL LIST ITEM INDICATOR & BOTTOM FIGURE IS QUANTITY.
12. PART SHALL BE NO. 56 AS SUPPLIED BY MINNESOTA MINING & MFG. CO., ST PAUL, MINNESOTA, OR EQUAL.

SYM	QTY	REQ'D.	AS REQ'D.	ITEM	REQ'D.	PART NO.	DESCRIPTION	MATL	MATL SPEC	NOTES
A ₆	13	AS REQ'D.	AS REQ'D.	SM-C-249037-4	13		TAPE-ELECT. 5/8 WIDE			2412
	12	AS REQ'D.	AS REQ'D.		12		VARNISH			9
	11	AS REQ'D.	AS REQ'D.		11		LOCTITE			10
	10	AS REQ'D.	AS REQ'D.	SM-B-28320T	10		WIRE-MAGNET			
	9	AS REQ'D.	AS REQ'D.	SM-B-28322T	9		CAPACITOR-FIXED			
	8	AS REQ'D.	AS REQ'D.	SM-C-249037-1	8		NUT	SST430		1
	7	AS REQ'D.	AS REQ'D.	SM-B-24924B	7		SWITCH-THERMOSTATIC			
	6	AS REQ'D.	AS REQ'D.	SM-B-249214	6		TUBING			8
	4	AS REQ'D.	AS REQ'D.	SM-C-249037-3	4		TAPE-ELECT. WIDE			2412
	3	AS REQ'D.	AS REQ'D.	SM-C-249037-2	3		TAPE-ELECT. 1/8 WIDE			5412
	2	AS REQ'D.	AS REQ'D.	SM-B-249036	2		CAN ASSY-OVEN			

APPLICATION				DRAWN		CHECKED		APPROVED		ROLLING-BASIS-66		DEPARTMENT OF THE ARMY	
558-0395-003	1	SM-C-249046	SC-DL-248775	ECS						14214-PH-51-93			SIGNAL CORPS ENGINEERING LABORATORIES
UNLESS OTHERWISE SPECIFIED: DECIMAL DIMENSIONS INCLUDING HOLE SIZES MAY VARY ±.008 FRACTIONAL DIMENSIONS INCLUDING HOLE SIZES MAY VARY ±1/64 MACHINED ANGLES MAY VARY ±.1° BROKEN ANGLES MAY VARY ±.25° BROKEN ANGLES MAY VARY ±.1° ECCENTRICITY BETWEEN ANY DIAMETERS ON THE SAME CENTERLINE SHALL NOT EXCEED .010 TOTAL INDICATOR READING. ALL DIMENSIONS ARE FINISH DIMENSIONS INCLUDING APPLIED FINISH AND ARE GIVEN IN INCHES.				REVIEWED PME		APPROVED HLY		DATE 14 FEB 56		SCALE 1/1		FORT MONMOUTH NEW JERSEY	
SM-C-249037				CAN-OVEN, WOUND									